

XD Model articulated truck model

**User**

**Manual**

XD model

Dear users:

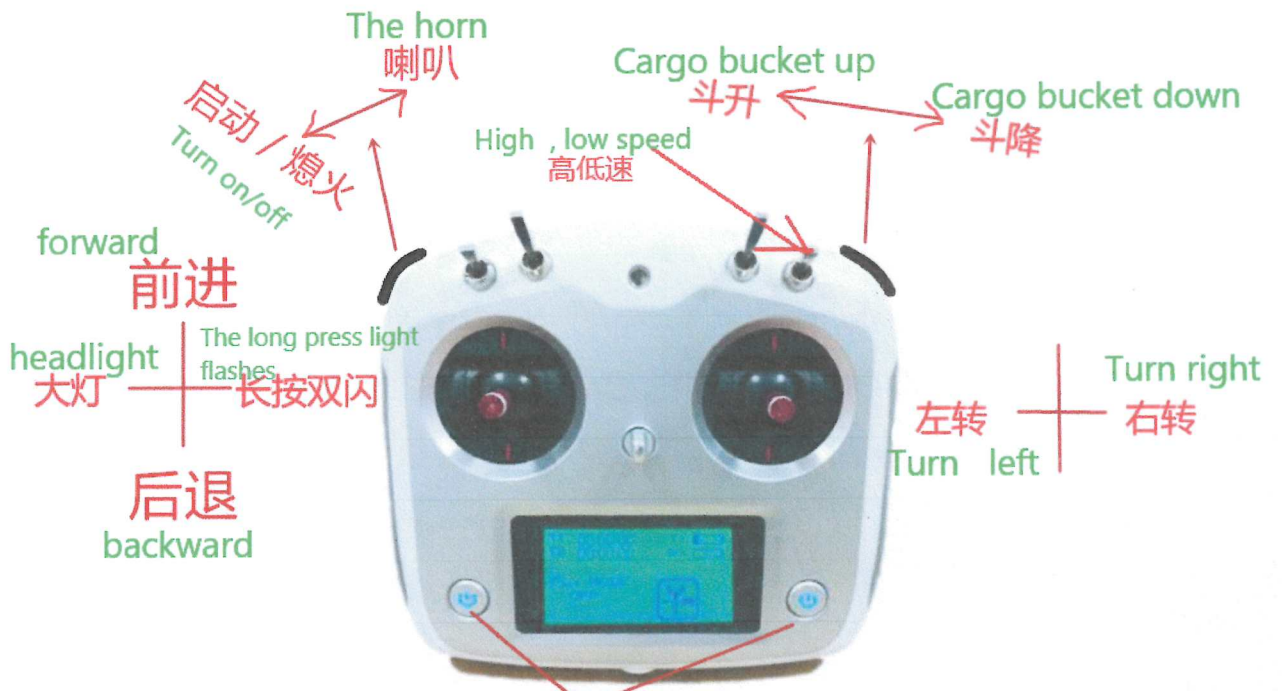
In order to ensure that you can better experience the fun of this loader and let you know more about this loader, please be sure to read this book. If you do not follow the instructions, you will be responsible for the consequences.

This product does not contain battery

Suitable age: above 14 years old



Scan the qr code with the phone to see the operation demonstration.



同时按3秒开机/关机

Press 3 seconds at the same time, turn off/on



反面

operate

I 、Please do not change any circuit of this machine. The buyer is responsible for the consequences caused by the circuit change.

II 、 in order to avoid unnecessary trouble, please do not change the remote control parameters.

III 、 About articulated truck and remote control battery types:

1. Please use 4 5#AA batteries for remote control. Do not change remote control Settings.

2. Recommended for articulated truck battery: About 3S 4200mah, above 35C discharge, XT60 plug, size: 136\* width: 45\* height: 35MM or less.

IV 、 Switch sequence of articulated truck:

1. Starting sequence of articulated truck: first turn on the power of the remote control, then turn on the power of the

machine, wait for 3 seconds, then push the start button, wait for about 3 seconds before operation

2. Turn off order of articulated truck: press the "turn off" button first, then take out the machine battery, and finally turn off the remote control power

(please be sure to use in the above order, otherwise it may cause abnormal electrical adjustment and remote control program, causing unnecessary trouble)

V、 Do not change any Settings of the remote control.

VI、 Hydraulic oil filling method:

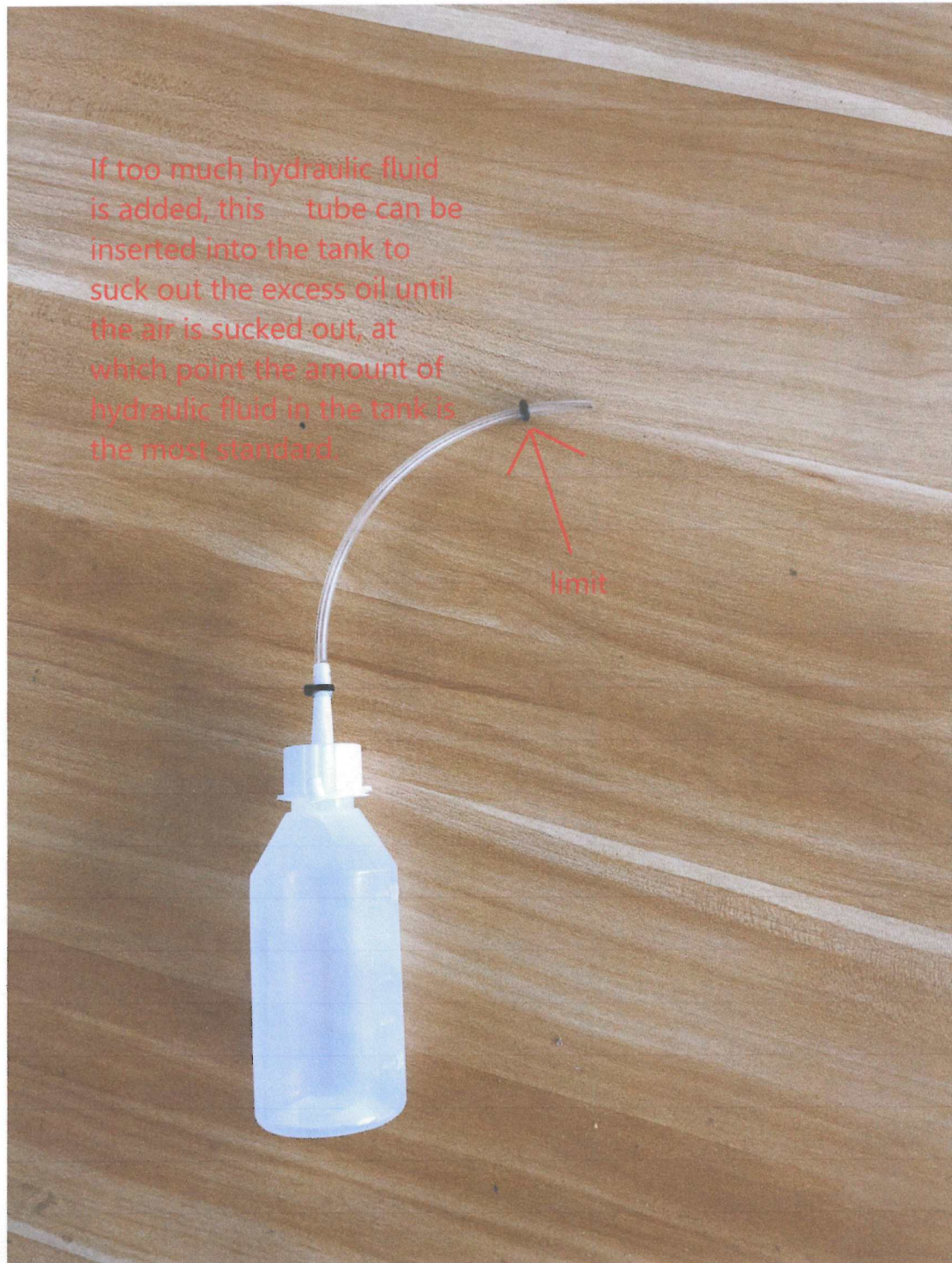
1. Please use normal 32# anti-wear hydraulic oil.

2. Add 80ML~90ML 32# anti-wear hydraulic oil for the first use.

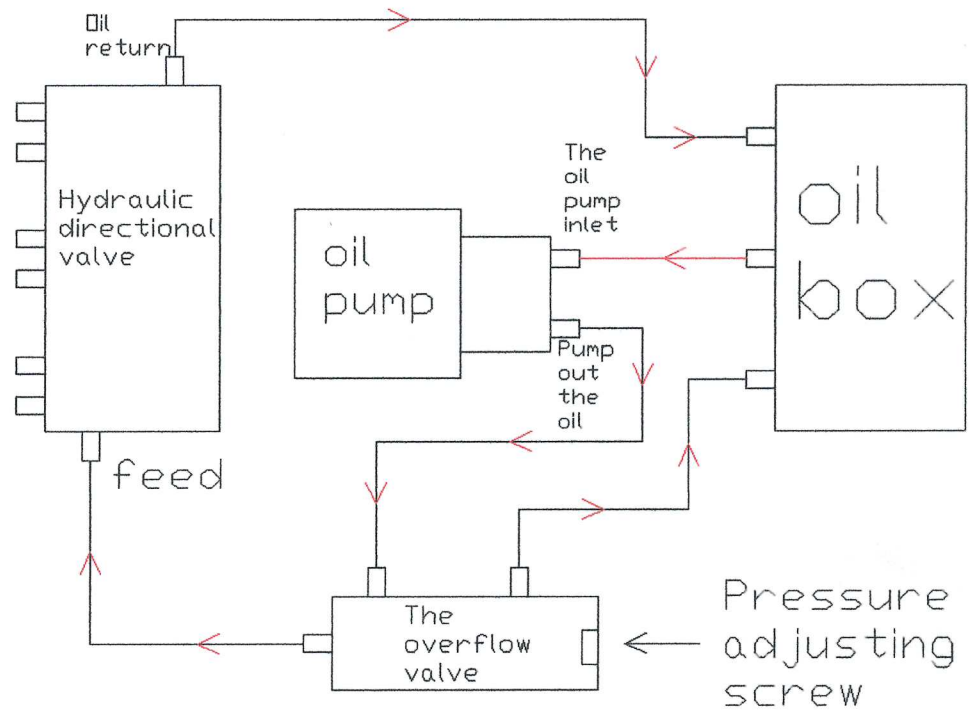
3. In the process of playing, if you find that the action of the hydraulic cylinder sometimes exists, sometimes does not, please add the hydraulic oil at this time, the refueling quantity is: add to the bottle can suck out the oil until the air is the best, refer to the figure below.



## VII、 Refueling bottle operation:



## VIII、 Hydraulic circuit diagram:



1. It is recommended to use 2.5-3mpa system pressure and 2.5mpa factory pressure(under the premise of this pressure has a very large power)
2. The highest pressure should not exceed 5Mpa, or the pipe will burst easily (it is recommended that players do not easily try, replacing the hydraulic tubing will be a



big project).

**IX、 Do not adjust the sound group more than three blocks.**

X、About the setting of the sound module (please do not change the setting of the sound module. If you change it unintentionally, please refer to the following methods to set it) :

1. Long press the forward channel to enter the setting mode when the engine is off, and then set it according to the voice prompt (generally no setting is required, and it has been set by the factory). Do not change the volume of the sound group. The main menu selection of sound group is to use the forward and backward channel rocker, and the second menu selection is to use the steering channel rocker. For example, select the volume adjustment menu, when the volume is adjusted by the steering channel rocker.

2. Note: because the power amplifier of the sound module is too large, the volume of the sound module cannot be set to the maximum, otherwise it will burn the horn (usually set to the third gear).

3. If there is no sound in the sound group, please unplug the battery, turn off the remote control and restart without sound, then the speaker can be judged to be out of order.

4. If the horn is turned off unintentionally, repeat the 3 cloth to restore the sound.